



泰國 Thailand

\$2,390 起

3 天 2 晚曼谷 Jasmine 酒店集團優惠

3 Days 2 Nights Jasmine Group Hotel Bangkok

出發日期 Departure dates: 09/07 – 30/10/2024

出票日期 Issued Ticket date: Till 31/08/24

Jasmine
GROUP HOTEL

CATHAY PACIFIC

amazing
THAILAND



Jasmine 59 Hotel (5*)

BTS – Thong Lor 站步行 5 分鐘

Website: <https://www.jasmine59.com/en>

Deluxe Room (33 sqm)

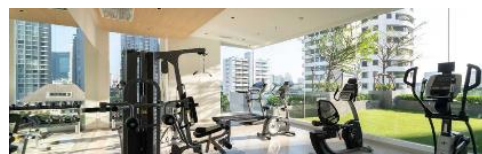
延長住宿: 每晚 **HK\$690 起**(包 2 早餐)

佔半房 <每位價錢>

HK\$ 2,390 起

Hotel information: Jasmine 59 Hotel in the located heart of Sukhumvit 59, just 5 minutes walking to BTS Sky train Thonglo station.

Hotel Facilities: Free WIFI, Gym, Sauna, Steam, Heated Relaxing Pool, Shuttle Tuk Tuk Services, Laundry, Wellness Centre, Basketball Court..etc.



Jasmine City Hotel (5*)

BTS – Asok 站步行 3 分鐘

Website: <http://www.jasminecity.com/>

Superior Studio (34 sqm)

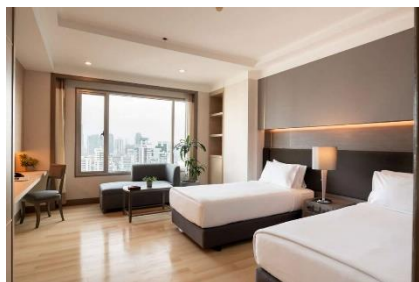
延長住宿: 每晚 **HK\$750 起**(包 2 早餐)

佔半房 <每位價錢>

HK\$ 2,450 起

Hotel information: Jasmine City Hotel in the located heart of Sukhumvit 23, just 3 minutes walking to BTS Sky train Asok station and MRT Subway Sukhumvit station.

Hotel Facilities: Free WIFI, Executive Lounge, Swimming Pool, Gym, Yoga Class, Meeting facilities.. etc.





泰國 Thailand

Package Inclusion:

- Roundtrip economy class Ticket Hong Kong and Bangkok by Cathay Pacific.
- 2 nights accommodation with breakfast.
- 0.15% TIA Levy.

Terms & Conditions:

- **Price is based on low season for reference only. Supplement will be applied during high season, holidays or event dates. Please contact our staff for enquiry.**
- Valid for Hong Kong residence only.
- **Hotel stay must be completed on or before 31 Oct 2024.**
- Flights and room confirmation are subject to availability.
- Package is non – endorsable, non – reroutable and non – refundable.
- Prices quoted are per person basis and subject to change without prior notice.
- Hong Kong airport security charge, airlines insurance surcharge, airlines fuel surcharge, travel agent service fee and any local government taxes are not included.
- Reservation must be made at least 7 working days prior to departure.
- For reservation made within 10 working days prior to departure, a non-refundable full payment is required.

套票包括:

- 國泰航空來回香港至曼谷經濟客位機票乙張。
- 2晚酒店住宿包早餐。
- 0.15%旅監局印花徵費。

條款及細則:

- 套票以淡季價格計算，於旺季、假期前夕或大型節日期間出發，需另付附加費。詳情向本社職員查詢作準。
- 以上價錢只適用於香港居民。
- 酒店住宿必須於 2024 年 10 月 31 日或之前完成。
- 所有預訂須視乎酒店及機位情況方能確定。
- 旅遊套餐在任何情況下都不能更改，轉讓或退還款項。
- 費用均以每人計算，費用如有調整，恕不另行通知。
- 費用不包括香港機場保安稅，各地機場離境稅，保險附加費，燃油附加費，旅行社服務費及任何當地政府稅項。
- 所有訂位手續須於出發前不少於 7 個工作天內辦理。
- 凡於出發前 10 個工作天內辦理預訂手續，須繳付所有款項。已付之費用概不退還。

Cathay Pacific Airfare Surcharge 國泰航空機票附加費:

Departure date 出發日期	Flight Pattern 航班	Booking Class 訂位	Ticket Validity 機票有效期	Surcharge 附加費	
				Adult 成人	Child 小童
提早優惠: 出票日期: 由即日起至 2024 年 8 月 31 日					
		Light (包登機行李 1 x 7KG + 寄艙行李 1 x 23KG)			
09 Jul - 31 Jul 24 01 Sep - 30 Oct 24	HKG-BKK-HKG by CX 香港-曼谷-香港 適用於國泰航空	Q	2-14 Days	0	0
		N		430	320
Q		380		280	
N		630		490	
01 - 31 Aug 24					
*Price is for reference only, subject to change without prior notice 價錢如有調整，恕不另行通知					



**PATTERSON
TRAVEL SERVICE**

SINCE 1949

恒利旅運有限公司

www.pattersontravel.com.hk

License no.: 350200

TEL : (852) 3102 2371 FAX : (852) 3102 2380

EMAIL : package@pattersontravel.com.hk

Address : Room 606, 6/F, Tower 1, Harbour Centre, 1 Hok Cheung Street,

Hung Hom, Kowloon 九龍紅鸞鶴翔街1號維港中心第1座6樓606室

PattersonTravel

Operated by H.C. Patterson & Co Ltd.

AC150/EN50

Issued:04/07/24