



Patterson Travel 67th
恒利旅運 since 1949 ANNIVERSARY

LICENCE NO: 350200



Imagine your Korea



*第23屆冬季奧林匹克運動會將於2018年在韓國江原道平昌舉行



韓國首爾四天自悠行

出發日期: 2017年 9月13日至 10月28日

凡於9月13日至28日或
 10月9日至28日出發, 每位可減HK\$300

套票包括:

- ※ 真航空來回香港至首爾經濟客位機票乙張 (電子機票).
- ※ 3晚首爾酒店住宿 (不含早餐).
- ※ HK\$100,000 旅遊平安保險.
- ※ 0.15%旅遊業議會印花稅.



Routing	Flight No.	Departure/Arrival	
HKG-ICN	LJ 114	13:20/17:55	Daily
ICN-HKG	LJ 113	09:30/12:10	

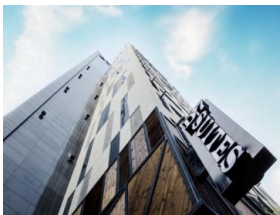
Jin Air (LJ) is the low cost subsidiary of Korean Air

** 航班時間及機型以航空公司最後落實為準 **

Tour code: KORSEL04 / Ref: LJSEL4D3ND7-V2
 Issue date: 13Sep,2017

Per person in HK\$/每位收費以港幣計算

Hotel Name 酒店名稱	ABF	Room Type 房間種類	Validity 有效日期	Adult 成人			Extension Night 延長住宿	
				Twin 雙人房	Single 單人房	Triple 三人房 (DBL+Single)	Twn / Single 雙/單人房	Triple 三人房 (DBL+Single)
Dongdaemun area (東大門區)								
D7 Suites Dongdaemun (位於鐘路東大門) http://www.d7suites.co.kr/	X	Deluxe DBL / Standard Twin	13Sep-28Oct'17	1,900	2,550	1,900	480	670
● Surcharge of HK\$90/room/night on Friday-Saturday.								



Ticket Surcharge Table 機票附加表

Departure Dates 出發日期	Booking Class 訂位編號	Ticket Validity 機票有效期	Adult 成人	Child 小童
13-29Sep & 09-28Oct'17	G (由 Patterson 訂位)	0-15 days	Less \$300	
13Sep-28Oct'17	S	1 Year	None	
	V		\$ 130	\$ 100
	X		\$ 290	\$ 230

Terms & Conditions 條款及細則:

- Child Price (Share Twin or Extra Bed): Adult Prices Less \$250 (Share Twin or Extra Bed) 小童價格 (佔半房或加床): 按成人價格減 \$250(佔半房或加床)。
- Price quoted subject to hotel special seasons surcharge. 酒店如因特別日子需另收附加費,恕不另行通知。
- Hotel stay must be completed on or before **31Oct17**. For hotel stay thereafter, please contact our travel consultant.
酒店住宿必須於 2017 年 10 月 31 日或之前完成。如有任何查詢,請與我們的旅遊顧問聯絡。
- Prices quoted are on per person basis and subject to change without prior notice. 費用均以每人計算,費用如有調整,恕不另行通知。
- Flights, hotels & option local tour confirmation are subject to availability. 所有預訂須視乎機位,酒店及收客情況方能確定。
- Package is non-endorsable, non-reroutable and non-refundable. 旅遊套票在任何情況下都不能更改,轉讓或退還款項。
- Applicable airport tax, security fee and other charges are required upon ticketing, 費用不包括各地機場離境稅,香港機場保安稅及其他稅項。
- Reservation must be made at least 7 working days prior to departure. 所有訂位手續須於出發前不少於七個工作天內辦理。
- For reservation made within 7 working days prior to departure, a non-refundable full payment is required.
凡於出發前 7 個工作天內辦理預訂手續,須繳付所有款項,已付之費用概不退還。



如欲查詢搭乘其他航空公司之套票價錢,請與我們職員聯絡。



Operated by H.C.Patterson & Co Ltd. (Licence No. 350200)

☎ : 3102 2371 ☎ : 3102 2380

Website: www.pattersontravel.com.hk

E mail: package@pattersontravel.com.hk

Address: Flat F, 8/F, No. 8 Hart Avenue, Tsim Sha Tsui, KLN

百樂門酒樓樓上 (MTR Exit A2, D2 or N1)

(AC150 / EN50)

Issued Date : on 13Sep2017

Patterson Travel
since 1949



Operated by Bao Shinn Int'l Express Ltd. (Licence No. 352614)

☎ : 3188 6611 ☎ : 3188 6622

Website: www.baoshinn.com.hk

E mail: reservation@baoshinn.com.hk

Address: Flat A-B, 8/F, No. 8 Hart Avenue, Tsim Sha Tsui, KLN

百樂門酒樓樓上 (MTR Exit A2, D2 or N1)

Please call for duplicated e-mail or needless, thanks you!

Page 1 of 1